



portfolio
Lucas Sloot
mid 2025



Water doet wat water doet
(water does as water does)
2025

*Water flows
Via rivers like pathways
through the land
Water does as water does,
without thinking how*

*Water comes
The sealevel is rising
stronger then ever before
Land changes into sea and
turns the delta to salt waters*

*But maybe even worse;
Water goes
Ground water will lower and
dries the land even further
The last bogs disappear and
we'll watch over new
desserts*

*presented at de
Ecologische Tuin during
'Verborgen Paden'*



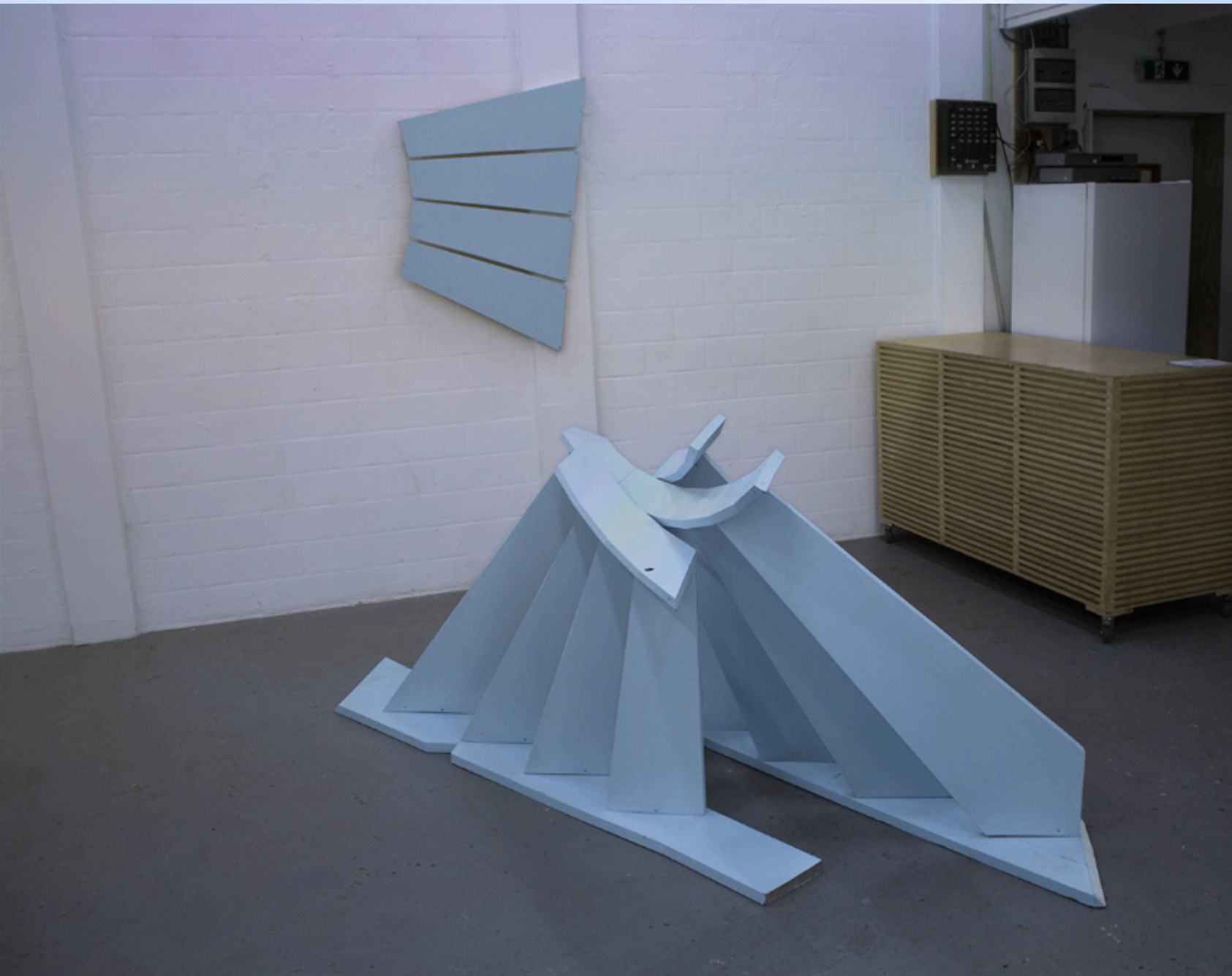
Alle Ruimte
2025

collab with Barbara Walbrun

Two makers with a different approach to a similar (looking) work. One working with spraypaint to portray spaces and their lightfalls, the other working with digital drawings, recreating a memory of a space once been.

They fit together nicely, don't they?

presented at 'Galerie Zijlstra'



Cluedo 2
2024

A disassembled spiraling staircase. The pieces apart make new forms based on mathematical principles, resulting in waving and circular shapes

*presented at De Bouwput
during 'Op de manier waarop
een koe een portret van
George Washington niet
begrijpt*



Ode to the River
(Liefde voor de Mark)
2024

A story of the origin of a river. Rivers are always like the lifelines in the landscape. This one in particular made it possible for Breda to become what they are

On the river itself there's a new landscape which copied elements from the surroundings where this river originates from. The squashy floor like a bog, the moist ground that wet your bare feet, the abundant colours of the grasses

The drawings show the surface water from the area. The straight lines show the influence humans are having on these fragile soils

*presented on De Veerman,
a pontoon made by
Observatorium*

*thanks KOP Breda &
CrossArts for making this
possible*



De Watertoren
(The Water tower)
2024

collab with Judith Reijnders,
MOSS Social Club & Chant v
Lieshout

*A water reservoir catching
the rain water during
summertime*

*Because of uncertain times,
where it can be really rainy
and wet or really dry, the soil
is losing its ability to
regulate the water, like a
sponge*

*This reservoir is filling up in
rainy periods, so visitors
(which are more likely to
show in dry and sunny
weather) can water the
nearby plants when needed*

*The future of everything is
changing with the water in
many ways*

*thanks Amarte,
for funding this project*

*thanks Folly Art Norg,
for hosting us*



This is the new and improved
you
2024

When it can be done better!

*This custom made tree
branch is equipped with the
best technology. The leaves
are replaced with solar
panels so this branch can put
the sun's energy to actual
power*

*When it is capturing sunlight
it is lighting up LEDs along
it's lifelines*

*The cyborg tree branch that
is just better*

*Presented at Open Stals
Droomland*

*presented at Droomland
by Open Stal*



A Splitting Tree Trunk
2024

*This painting made from
spruce wood has traces of the
shape the wood had when it
was still a tree*



Don't leave - The ripping of
an icon
(videostills)
2024

*A last moment with one of
my key works*

*I hope you stand tall in the
memory of many*



At ACEC Underground
2024

*What was left over from my
experience of this place? A
reconstruction by memory a
few weeks after I've worked
here*



Een Houten Expositie
(A Wooden Exhibition)
2024

*An exhibition about wood.
Like a tribute. Wood is fun
and easy to work with. It's
soft, it's warm, it's natural.
It keeps on moving when
temperature or humidity
change. It's alive. Working
with wood is like working
together as equal partners*

*During this presentation
works are presented that
give wood the opportunity to
be even more like wood.
Paintings of OSB,
underlayment or Douglas.
With stronger colours and
scents*

*A Wooden Exhibition tells
about how we relate to each
other. Doing this with with
respect for that partner*



*Thanks ACEC for giving me
this opportunity*



The People
2024

A painting of a plywood sheet made of poplar wood

Poplar is a tree that was quite popular in midwestern Europe late 19th century up to halfway 20th century. It's a tree that grows straight up, grows really fast and doesn't splinter much. Perfect for building quickly. It was so suiting for the time that extensive programs unrolled to 'better' the tree even further

Although it lost a lot of it's appeal lately, it might become more popular again in the near future, since the now-standard wood (spruce) could be having troubles adjusting to dryer climates

The latin name for this type of tree is populus, which translate to both the people as refers to popular



When Weathered
2023-2024

*Both steel and wood react to
wind and rain. Steel gets
rusty, while wood curls*

*shown in A Houten Expositie
(A wooden exhibition)
at ACEC*



Stem Wijzer
2023

In search of a better election process and thus a better democracy

During election day in 2023 I offered voters an extra opportunity to vote with an alternative system as well. At this booth you were able to vote for two parties; one with a positive vote, one with a negative

guerilla during election day



Trail Drawings
2023

collab with Carel Lanter

*Visiting a place I've been a
year ago and making
drawings of the trail*

*A follow up on Das Wasser
fließt der Grenze entlang*



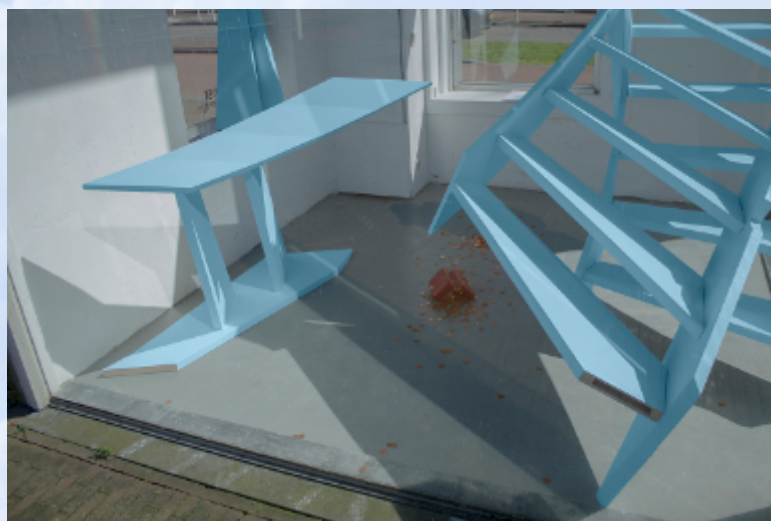
Unironed
2023

A crooked version of a wooden H-profile. This kind of profile is often a steel limb used in constructions like factory halls and tall buildings. The H-shape makes it light and sturdy



OSB sunset
2023

A painting of shapes that are present in it's own surface. Some of the reliefs are manually made, but the clear texture of OSB really shines

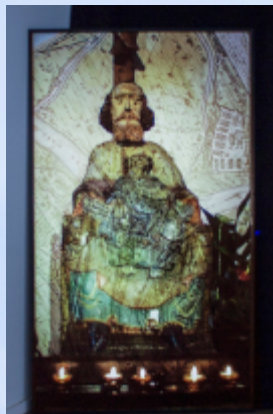


Cluedo
2023

This tower is all that's left from an old textile factory in Almelo. This tower was given by the employees to the employer by setting aside 5 cts per worker on a weeks salary. (Around 20 euros by todays standards)

The towers proportions seem a little strange to me. The ornaments and clocks suggests a way taller tower. And than there is that hidden upper floor that gives space to something unknown... Better investigate. Let's go up

*at Kunsttrentjes /
Nieuwe Twentse Kunst*



Das Wasser fließt die Grenze entlang
2023

collab with Carel Lanthers

This statue was made in the 11th century and depicted Mary with child. In the 17th century the head of both Mary and the child were replaced by new heads. This time showing saint Machutus and a disabled child



This act became a centerpoint to the project Das Wasser fließt die Grenze entlang. In search of both physical borders and guidelines, aswell as mental differences between ourselves

During the Wildtuin at circa...dit I had the chance to work with Carel Lanthers on a project with the focus on the process. The result was shown at the circa...dit exhibition space and consisted of several works about the beheaded saint, a river, borders and relics

more to find: [video](#)
[soundscape](#)

thanks circa...dit

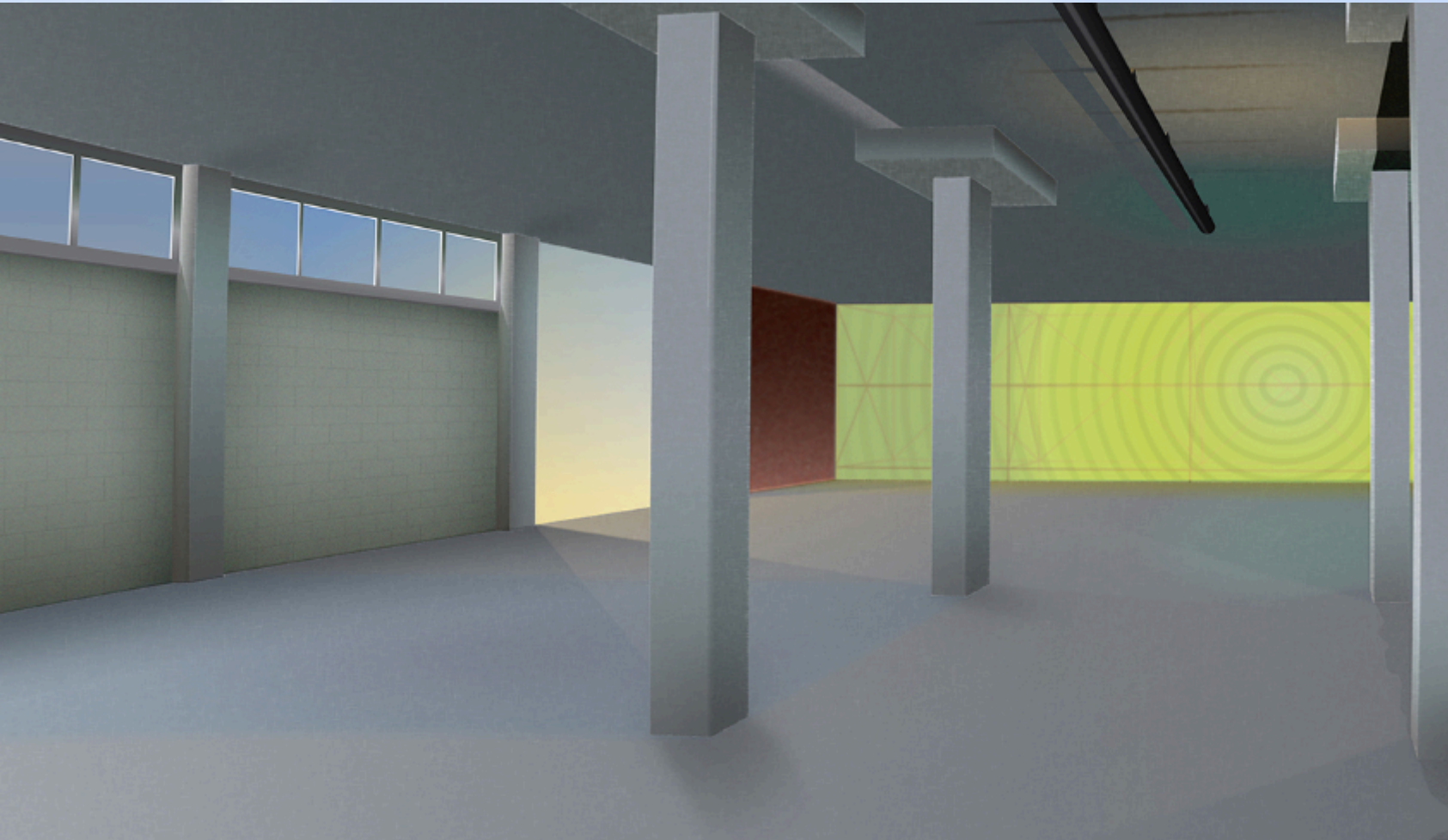


Isn't this where we met?
2022

*A family of streetlights is
traveling around. Here they
found a place to rest and
present themselves in a
crowded, former jail*

*This inside place feels
gloomy. They try to lighten it
up, but it doesn't seem to be
working...*

at BIGart



At Bijlmer Bajes
2022

*What was left over from my
experience of this place? A
reconstruction by memory a
few weeks after I've worked
here*



As long as it is in good intent
2022

*An installation that boosts
the appearance of Lexi the
Chestnut tree*

*Lexi is one of two chestnut
trees that were planted
around 200 years ago on a
private property midst of
nature reserve de Veluwe. In
the reserve the chestnut is a
foreigner that made it's
arrival by human hands. Now
it's a healthy tree that can
keep themselves healthy and
happy. But still it receives
human help in the form of
extra water, several wooden
aids and cleaning after to
present Lexi in their best way
possible*

*thanks Woest&Bijster for
giving me this opportunity*



Heel Krommetje
2022

*It tried to copy a piece of a
streetlight, but it isn't a
streetlight*

*It tried to copy steel, but it
isn't made of steel*

*It's a piece of wood trying to
be something else. It was
pretty convincing. Too bad
the years pass by and the
age is starting to show. You
can't alter how wood will
age. It is just so different
than steel. It is beautiful
though*



Aluminium
2022

The materials that are commonly found in a hammer are switched back and forth and, in doing so, are resulting in a strange combination



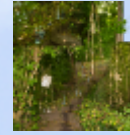
Isn't this where we met?
2022

*A family of lanterns
converging on a roundabout
up north, bringing with them
the question on how they
came together. In this get-
together the question they
ask themselves can also be
asked to you*

Isn't this where we met?

*thanks Voorheen de
Gemeente for giving me this
opportunity*

*Water doet wat water doet, 2025
installation, water, containers
various dimensions*



*Alle Ruimte, 2025
installation, digital drawings, spraypainting
150 x 100 x 30*



*Cluedo 2, 2024
wooden construction
various dimensions*



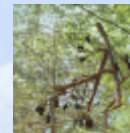
*Ode to the river, 2024
installation, mixed media, various objects
500 x 400*



*De Watertoren, 2024
wooden installation, ceramics, various objects
300 x 240 x 220*



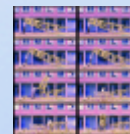
*This is the new and improved you, 2024
oak wood, solar panels, electrics
130 x 100 x 130*



*A Splitting Tree trunk, 2024
wooden painting
103 x 24*



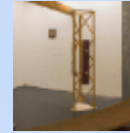
*Don't leave - The ripping of an icon, 2024
video
13:36*



At ACEC Undergrounds, 2024
digital media on wooden panel
30 x 14



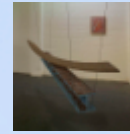
Een Houten Expositie, 2024
installation on wood
variable dimensions



The People, 2024
wooden painting
26 x 19



When Weathered, 2023/2024
wooden sculpture, sawdust, pigments, oil
210 x 60 x 70



Stem Wijzer, 2023
guerilla, event, wooden object
50 x 60 x 270



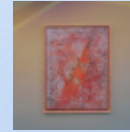
Trail Drawing, 2023
event, paper
multiple of 100



Unironed, 2023
wooden sculpture
210 x 45 x 50



OSB Sunset, 2023
wooden painting
60 x 42



*Cluedo, 2023
wooden objects, locker with coins
installation*



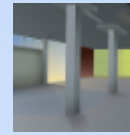
*Das Wasser fließt die Grenze entlang, 2023
clay, plaster, tree trunk, sound, projection
installation*



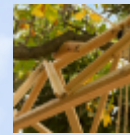
*Isn't this where we met?, 2022
wooden sculptures
variable sizes*



*At Bijlmer Bajes, 2022
digital media on wooden panel
30 x 17*



*As long as it is in good intent, 2022
installation of different types of wood
various sizes*



*Heel Krommetje, 2022
wooden object
40 x 40 x 6*



*Aluminium, 2022
casted aluminium
30 x 10 x 3*



*Isn't this where we met?, 2022
wooden sculptures
variable sizes*

